



Portable X-Ray Inspection System

PX120BP

Introduction

The PX120M / BP* X-ray digital imaging portable device is one of the most widely used portable devices in the world, which is the best choice for digital radiography of the injured in earthquake-stricken areas or military operations due to its low volume and weight and the placement of all its equipment in a suitcase or backpack*. It is therefore a powerful tool for mobile medical, rescue and veterinary teams.

Applications

- Rescue and relief teams
- Forensic medicine
- Sports teams physician
- Animal and veterinary radiography
- NDT

Features

- Single package carrying case/bag*
- Small and light detector panel
- Powerful and multilanguage UI
- Low dose leakage
- Stable wireless connection
- Single and dual* energy imaging
- Tablet PC included

* Optional Features

Technical Specifications

Detector Panel

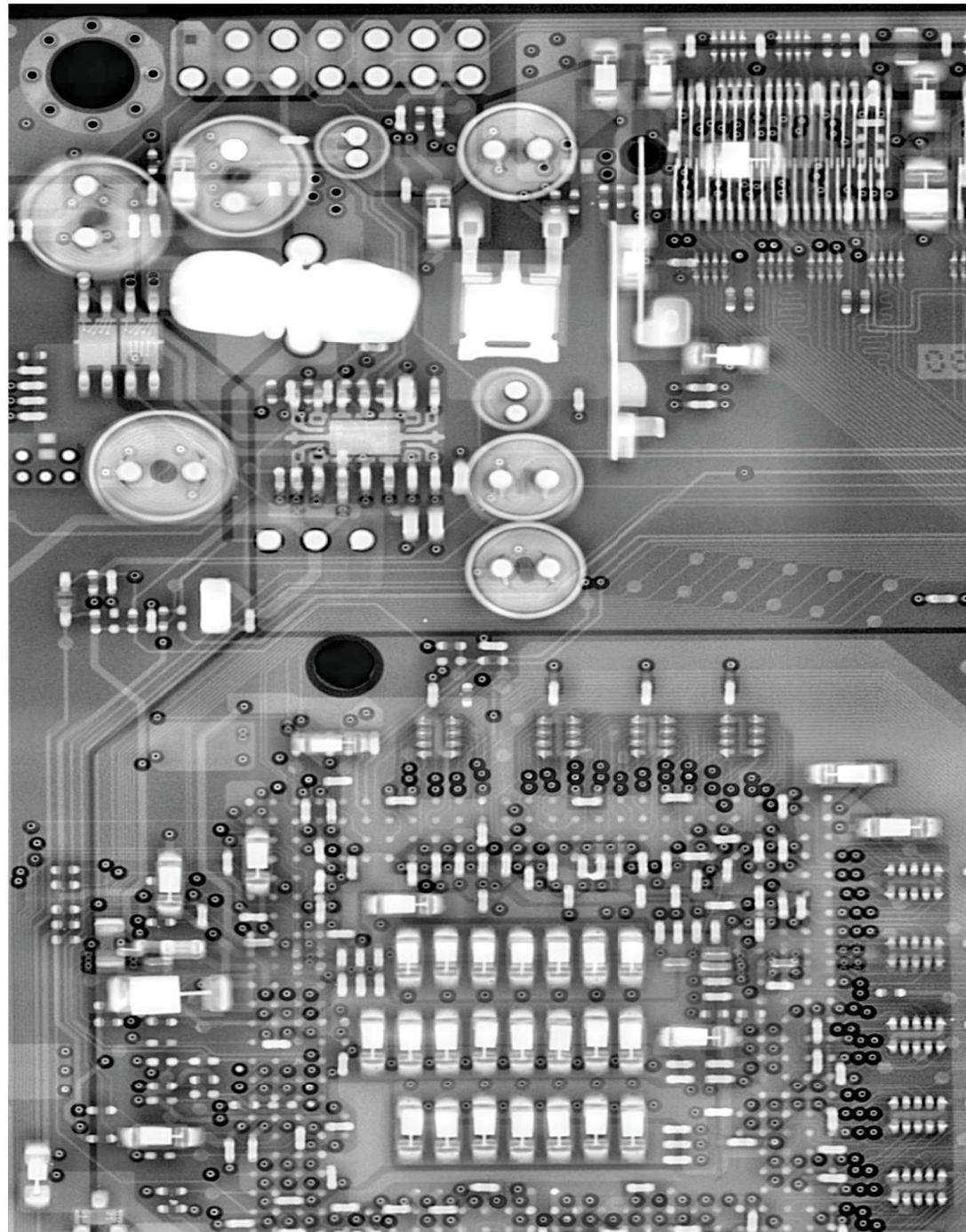
Wire Detection	39AWG, 40AWG*
Spatial Resolution	0.8mm, 0.4mm*
AcquisitionTime	10s~60s
Panel Dimensions	420*290*40mm
Active Area	300*200mm
Power Supply	3Ah Li-ion Bat.
Connection	WiFi, LAN
Operating Temp.	-10~+45 C
Penetration	20mm (steel)

X-Ray Generator

Voltage (kV)	40~120
Current (mA)	0.2~1
Power Supply	3Ah Li-ion Bat.
Connection	WiFi, LAN
Operating Temp.	-10~+45 C

Software

Output Extension	JPEG, PNG, Exlc.
Exposure Type	SE, DE*
Image Processing	Invert, Emboss, Pseudo, Focus, Rotate, Histogram, Annotation



X-Ray PCB Inspection System

PCB14

Introduction

PCB X-ray inspection nowadays is a necessity on modern PCBs to reduce the risk of industrial sabotage. With this device, using X-ray digital imaging technology, the hidden layers of the board and components can be inspected without damaging the electronic and logical function of it.

Applications

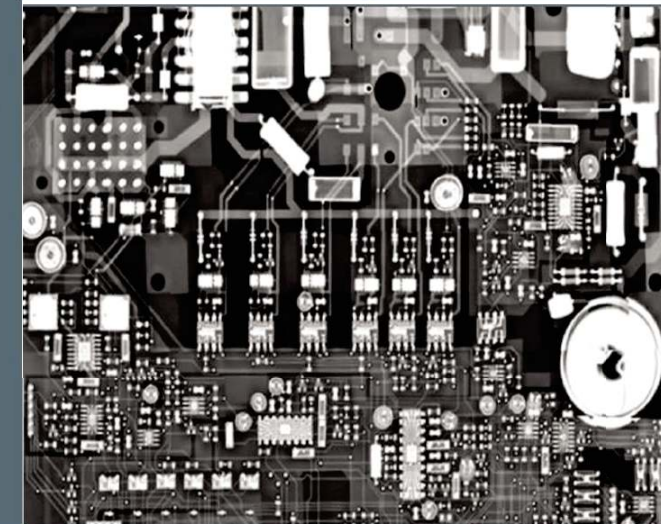
- Inspection of PCB components
- PCB reverse engineering
- Detection of defective parts
- Multi-layer PCBs analysis
- Solder anomalies detection

Features

- Quick imaging procedure
- Locating PCB in a lead box
- Zero radiation leakage
- Quick and easy setup
- Image merging algorithms

Technical specifications

Max Voltage	100KV
Max current	1mA
Power	100W
Focal spot size	0.1mm
Technology	FPD,CCD
Active area	200mm*300mm
Max resolution	30 μ
PC CPU	Core I5
Monitor	15 "





Slider (extender) System

PXT-SLD

Introduction

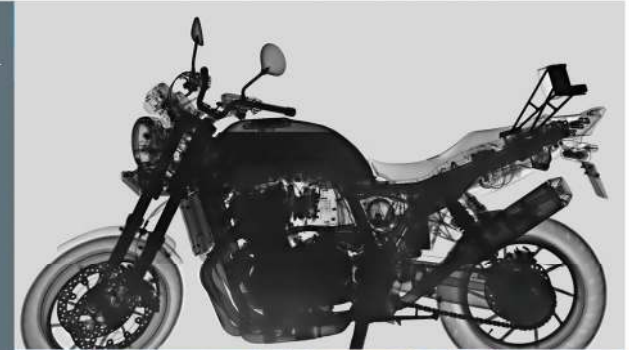
PXT-SLD system provides imaging capability of objects, larger than 60*40cm in 1 single scan. Using this tool makes the active area of the device up to 6 times larger. This system can connect to different types of detector panels.

Applications

- Customs control
- IED disposal
- Large packages inspection
- Aircraft wing quality control
- Ship hull welding quality control

Features

- Self-standing, portable
- High-quality mosaic image output
- Fully battery operated
- Wireless connectivity capability
- Ease on movement





FS – LDV 1400



Laser Doppler Vibrometer

FS - LDV

Introduction

Laser vibrometers are used in many applications such as automotive, aerospace, parts quality control, civil engineering, medicine and many more. In laser vibration measurement, it is possible to quickly and accurately (in micro and nano scales) measure vibration, displacement, velocity and acceleration of a surface or fluid remotely non-destructive and non-contact.

Applications

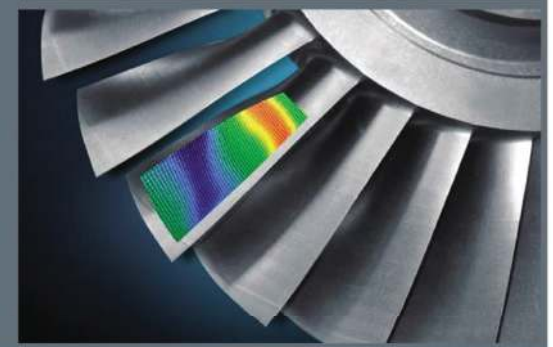
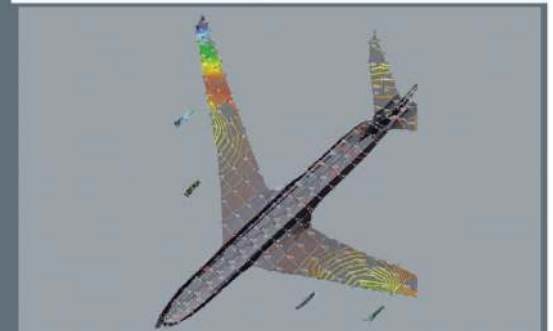
- Automobile ind. quality control
- Aerospace ind. quality control
- Power Plant Industries
- Archaeological Surveys
- Security care and monitoring

Features

- Noise reduction algorithms
- Standoff distance up to 150 m
- Different wavelengths
- Quick and easy setup
- Moisture and dust resistant
-

Technical specifications of device

Laser Source	He-Ne, Fiber*
Wavelength	623.8 nm, 1550 nm*
Maximum output power	2 mW, 30 mW*
Maximum effective range	50 m, 150 m*
Modulation frequency	40 MHz, 200 MHz*
Power supply	220 VAC



* Optional Features



FATEH SCAN

Check with confidence

Leading in Design & Manufacturing of
Innovative Digital X-Ray Imaging Systems

Tel: +98 21 910 31 987
Sale.FatehScan@Gmail.com